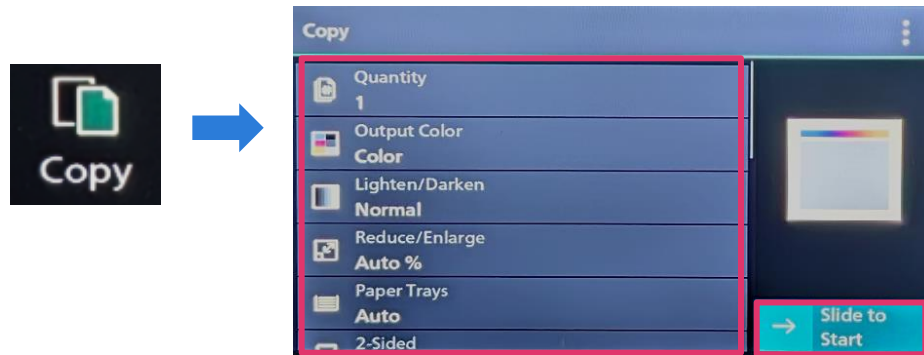


Apeos C2450 S Operation Guide

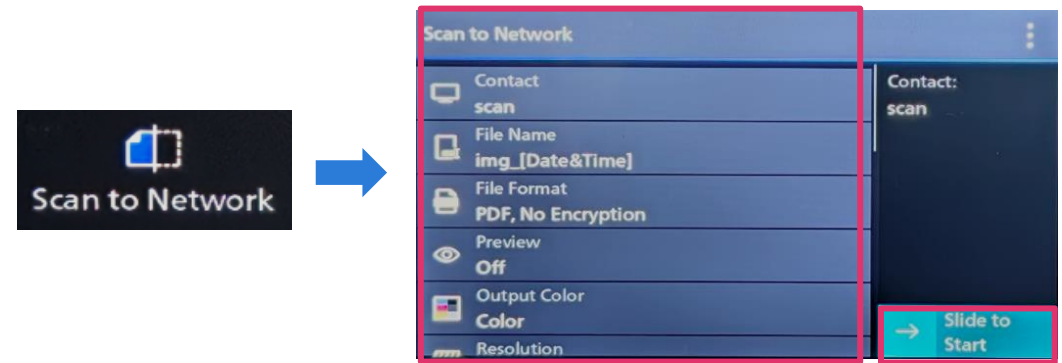
Copy

Select feature, configure the quantity, then tap on [Start].



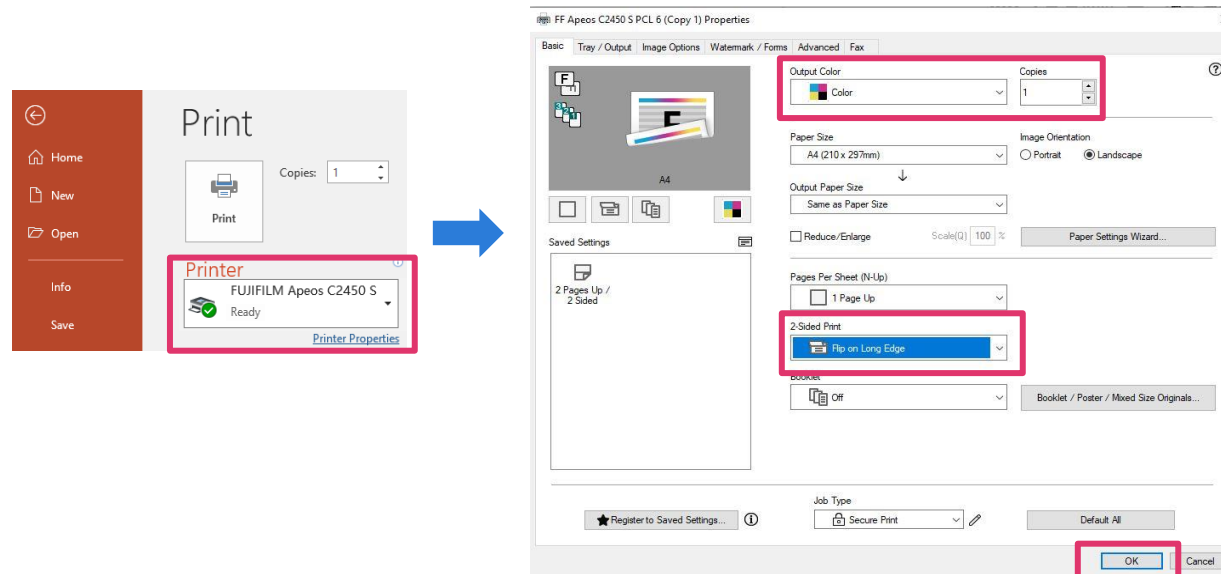
Scan to Network

Tap on [Scan to Network] select the recipient from address book and select the features, then tap on [Start].



Print

Select [Print], select the printer and click [Printer Properties] to select the features, and then click [OK].



Email

Tap on [Email] select the recipient from address book or set the destination information, and select the features, then tap on [Start].

